

April 16, 2026

For Immediate Release

Real Estate Investment Trust Securities Issuer
1-6-5 Marunouchi, Chiyoda-ku, Tokyo
Mitsubishi Estate Logistics REIT Investment Corporation
Representative: Takuya Yokota, Executive Director
(Securities Code: 3481)

Asset Management Company
Mitsubishi Jisho Investment Advisors, Inc.
Representative: Tetsuya Masuda, President & CEO
Contact: Takuya Yokota, General Manager, Logistics REIT
Management Department
TEL: +81-3-3218-0030

Notice Concerning Changes in Corporate Organization of the Asset Management Company

Mitsubishi Estate Logistics REIT Investment Corporation (“MEL”) today announces that its asset management company, Mitsubishi Jisho Investment Advisors, Inc. (the “Asset Management Company”), has resolved at its board of directors’ meeting on April 16, 2026 to change the organization of the Asset Management Company as below.

1. Organizational Changes (Effective date: June 1, 2026)

(1) Establishment of “New Business Development Department”

The New Business Planning Department will be formed to further sophisticate our business planning functions.

The change complies with the Financial Instrument and Exchange Law, the Building Lots and Buildings Transaction Business Law and other applicable laws and regulations. Asset Management Company will carry out all necessary notifications and other procedures.

Please refer to the APPENDIX for the Asset Management Company’s Organization Chart after the change.

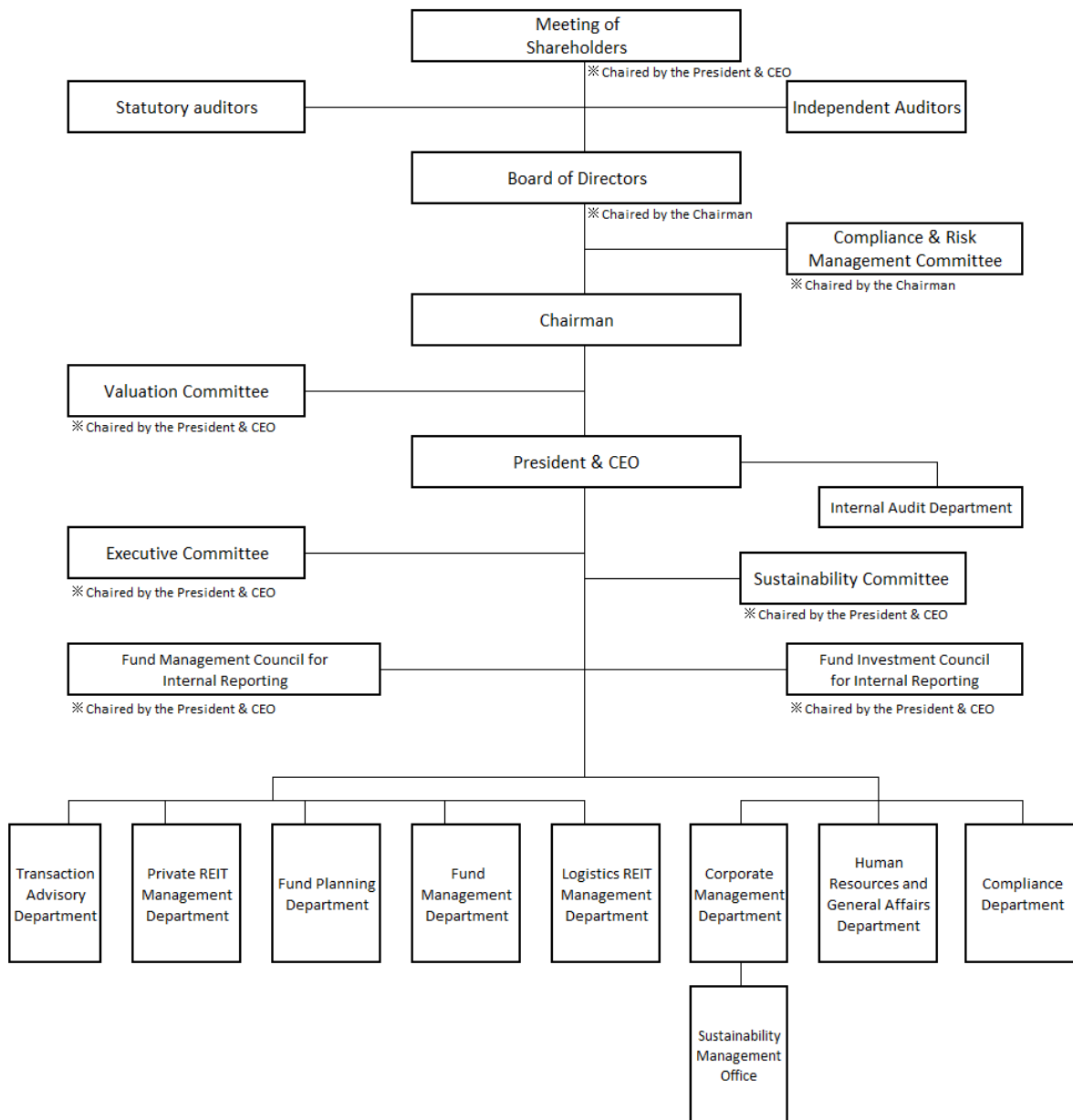
This is the English translation of original Japanese documents and is provided solely for information purposes. If there are any discrepancies between the translation and the Japanese original, the latter shall prevail.

For more information about Mitsubishi Estate Logistics REIT Investment Corporation, please visit:

<https://mel-reit.co.jp/en/>

APPENDIX

Asset Management's Organization Chart (Before the Change)



Asset Management's Organization Chart (After the Change)

